

# DARSEY 11442STS – DARSEY BATH & SHOWER SUITES

114 x 42 x 78 ¾ inches

SOAKER MODEL #11442STS

WHIRLPOOL MODEL #11442STSWP



## AQUATIC ADVANTAGE

- National distribution
- 7 manufacturing facilities
- Private fleet
- Centralized customer service
- Field support

## COLOR OPTIONS

Stock	Upgraded	Premium
White	Almond Biscuit/Linen Bone	Black Mexican Sand Sand Bar Sterling Silver

## FEATURES

- 2-piece tub & shower suite
- 42" x 42" shower with integral toiletry shelf and seat
- 72" x 42" bathtub with pony wall, 2-sided wainscot and integral skirt
- Subway tile
- Molded toiletry shelves
- 7 5/8" wainscot
- 1 seat
- Right or left hand tub location
- Ergonomic backrest
- Slip-resistant textured bottom
- AcrylX™ applied acrylic surface
- Lifetime limited warranty

### Whirlpool Features:

- 6 directional hydrotherapy jets
- Available in White and Biscuit/Linen only
- Color matched trim
- Pneumatic on/off control
- Advanced safety suction system

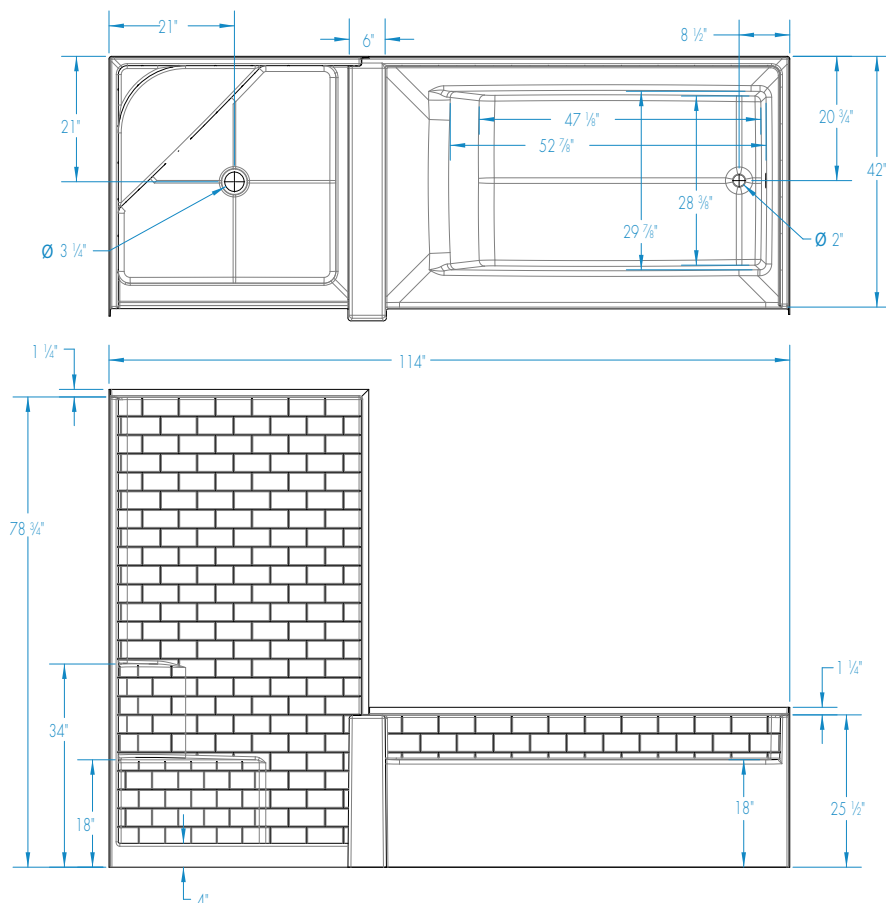
## OPTIONS

- Removable access panel (whirlpool models)
- Designer drain, waste & overflow
- Shower Door Series L051



# DARSEY 11442STS

114 x 42 x 78 ¾  
inches



## FEATURES

Dimensional Tolerance  $\pm \frac{3}{16}$ ". Dimensions needed for site preparation should be measured from the unit. Aquatic assumes no responsibility for preparatory work.

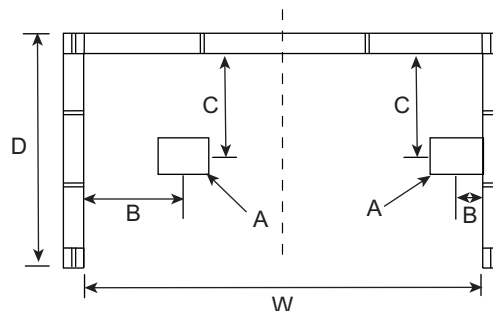
Model #	Material	Wall Finish	Jets	Motor	Controls	Drain	Net Wt. lbs.	Pkg. Wt. lbs.
Soaker #11442STS	AcrylX™	Subway Tile	0	-	-	LH or RH	250	260
Whirlpool #11442STSWP	AcrylX™	Subway Tile	6	63 GPM	Pneumatic	LH or RH	300	310

## DIMENSIONS

Specifications	inches
Width: Overall / Net	114
Depth: Overall / Net	43 ¼ / 42
Height: Overall / Net	80 / 78 ¾
Enclosure Opening	-
Skirt Height	18
Drain Rough-In (from Back Wall)	20 ¾ tub / 21 shower
Drain Rough-In (from Side Wall)	2 ½ tub / 21 shower
Drain: Diameter / Clearance	2 / ¾ tub 3 ¼ / ¾ shower

## FRAMING DIMENSIONS inches

Type	D Depth	W Width	H Height	A	B Tub/Shower	C Tub/Shower
Alcove	43 ¼	114	80	Box Out	2 ½ / 21	20 ¾ / 21



## SUMP DATA

Top of Drain to Bottom of Overflow	Capacity to Overflow gal	Min. Operating Capacity gal	WIDTH @ centerline		DEPTH @ centerline	
			Top	Bottom	Top	Bottom
12 ¾	74	51	52 7/8	47 1/8	29 7/8	28 3/8