

BOCCHI®

BELSENA 2.0

PULL-DOWN KITCHEN FAUCET



Product Code

2023 0001 XX

FEATURES:

- 35 mm ceramic disc valve cartridge
- Cartridge working life: >500,000 times
- Lead-Free faucet body, contains $\leq 0.25\%$ total lead content by weighted volume
- Maximum flow rate = 1.8 gpm (6.8 l/min) at 72 psi / Features added Boost feature that will up the sprayer to 2.2 gpm when engaged
- Spout swivels 360°
- Standard or Needle Spray with weighted shower hose
- 90° forward handle
- Includes flexible inlet hoses, each 24"
- Stabilizer flange included
- Extended 3.5 in shank

WEIGHT: 4.0 lbs

AVAILABLE FINISHES:

- CH - Chrome
- SS - Stainless Steel
- MB - Matte Black
- BG - Brushed Gold

DIMENSIONS:

Spout length = 8.58 in (218.7 mm)

Spout height = 8 in (203.5 mm)

Overall Faucet height = 15.7 in (399 mm)

OPTIONAL ACCESSORIES:

2180 0003 - Contemporary Deck Plate

2180 0004 - Traditional Deck Plate

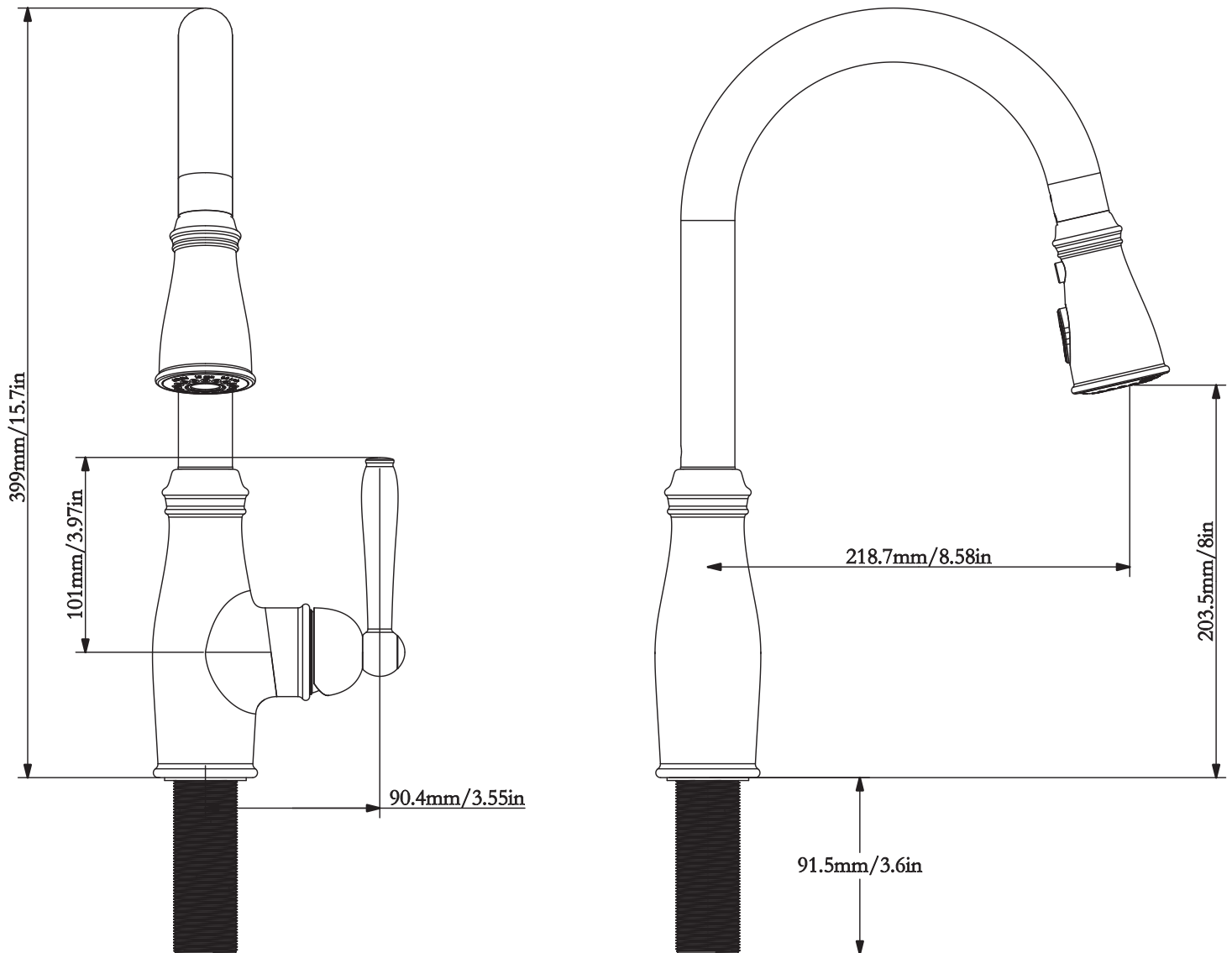
2340 0005 - Lesina Soap Dispenser

2340 0006 - Tronto 2.0 Soap Dispenser

CODES / STANDARDS:

ASME A112.18.1 / CSA B125.1 / NSF 61 / NSF 372 / AB1954 / DOE - Energy Policy Act 1992 / CEC - California Energy Consumption / Meets CalGreen requirements for kitchen faucets

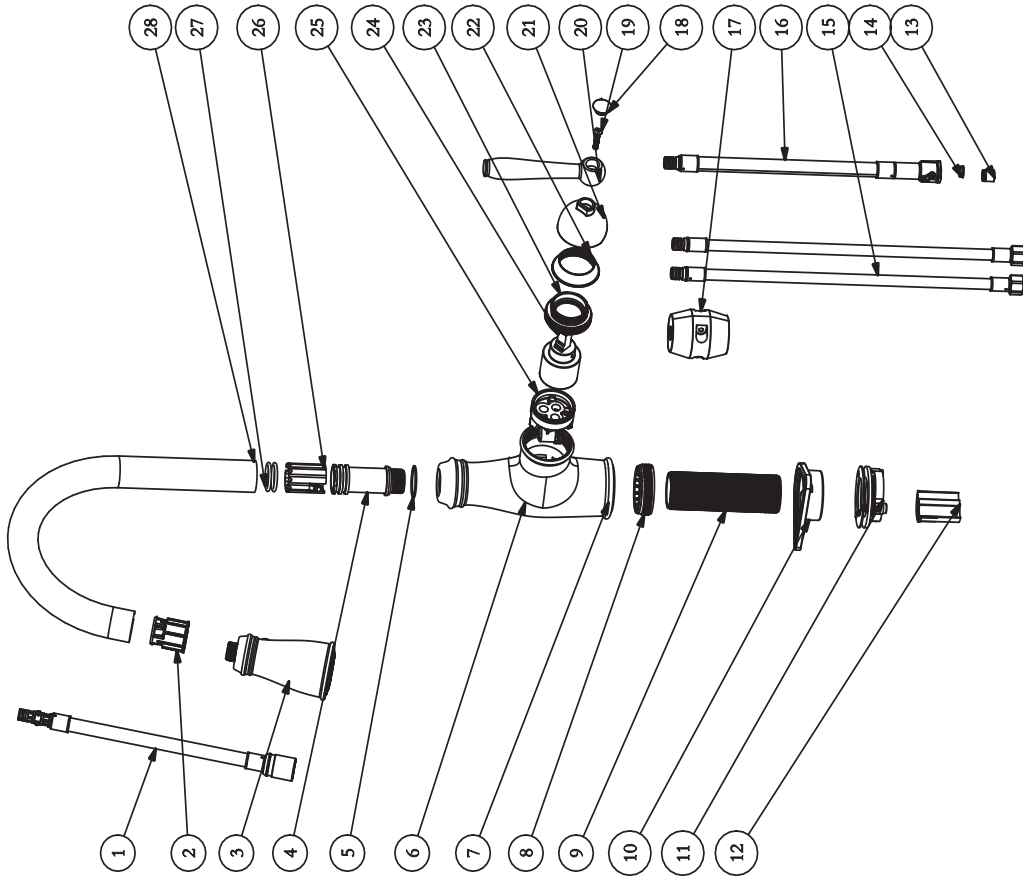
BOCCHI



IMPORTANT: These measurements are subject to change or cancellation. No responsibility is assumed for use of superseded or voided pages. BOCCHI reserves the right to make revisions without notice to product specifications.

BOCCHI®

| | | | | |
|-----|---------------|-------------------------|-----------------|-----|
| 28 | 121010471062 | Spout | SUS304 | 1 |
| 27 | R20_3X2_62X02 | 3521 ORING | EPDM | 2 |
| 26 | 121010471040 | Gasket | POM | 1 |
| 25 | 121010521011 | Cartridge Seat | PPA+50%GF | 1 |
| 24 | F35X27_6X01 | Cartridge Assembly | POM | 1 |
| 23 | 999910101326 | Nut | HPb57-3 | 1 |
| 22 | 121010211002 | Decorative Cover | ABS757 | 1 |
| 21 | 121010511058 | Handle | Zinc Alloy | 1 |
| 20 | 121010511059 | Handle | Zinc Alloy | 1 |
| 19 | C4X20_3X02M | Screw | SUS304 | 1 |
| 18 | 121010221001 | Handle | ABS727 | 1 |
| 17 | 999910101762 | weight | Iron | 1 |
| 16 | 999910061139 | Outlet Hose Assembly | TPE+PVC | 1 |
| 15 | 999910060483 | Inlet Hose Assembly | SUS304+PVC | 2 |
| 14 | 121010481019 | Flow Regulator | POM | 1 |
| 13 | N10X10_5X03 | Check valve group | PP | 1 |
| 12 | 121010481009 | Gasket | POM/M90 | 1 |
| 11 | 121010221021 | Accessories bag | Aluminium Alloy | 1 |
| 10 | 113110411013 | Stabilizer gasket | POM_CF2001 | 1 |
| 9 | 121010481008 | Mounting threaded pipe | Aluminium Alloy | 1 |
| 8 | 121010211001 | Nut | PA66+30%GF | 1 |
| 7 | 121010281001 | Washer | EVA | 1 |
| 6 | 121010511057 | Body | Zinc Alloy | 1 |
| 5 | 121110131011 | Washer | POM | 1 |
| 4 | 121010211015 | Spindle | Aluminium Alloy | 1 |
| 3 | 121110570058 | Sprayer | ABS | 1 |
| 2 | 121010471058 | Gasket | POM | 1 |
| 1 | 999910060801 | Pull-down Hose Assembly | TPE+PA | 1 |
| NO. | DWG.NO. | NAME | MATERIAL | QTY |



IMPORTANT: These measurements are subject to change or cancellation. No responsibility is assumed for use of superseded or voided pages. BOCCHI reserves the right to make revisions without notice to product specifications.