

BOCCHI®

LIVENZA 2.0

PULL-DOWN KITCHEN FAUCET



Product Code

2020 0001 XX

FEATURES:

- 35 mm ceramic disc valve cartridge
- Cartridge working life: >500,000 times
- Lead-Free faucet body, contains $\leq 0.25\%$ total lead content by weighted volume
- Maximum flow rate = 1.8 gpm (6.8 l/min) at 72 psi
- Spout swivels 360°
- Standard or Needle Spray with flexible, weighted gooseneck shower hose
- 90° forward handle
- Includes flexible inlet hoses, each 24"
- Stabilizer flange included
- Extended 3.5 in shank

WEIGHT: 3.5 lbs

AVAILABLE FINISHES:

- CH - Chrome
- SS - Stainless Steel
- MB - Matte Black

DIMENSIONS:

Spout length = 9.5 in (242 mm)
Spout height = 7.7 in (195.4 mm)
Overall Faucet height = 23.9 in (608 mm)

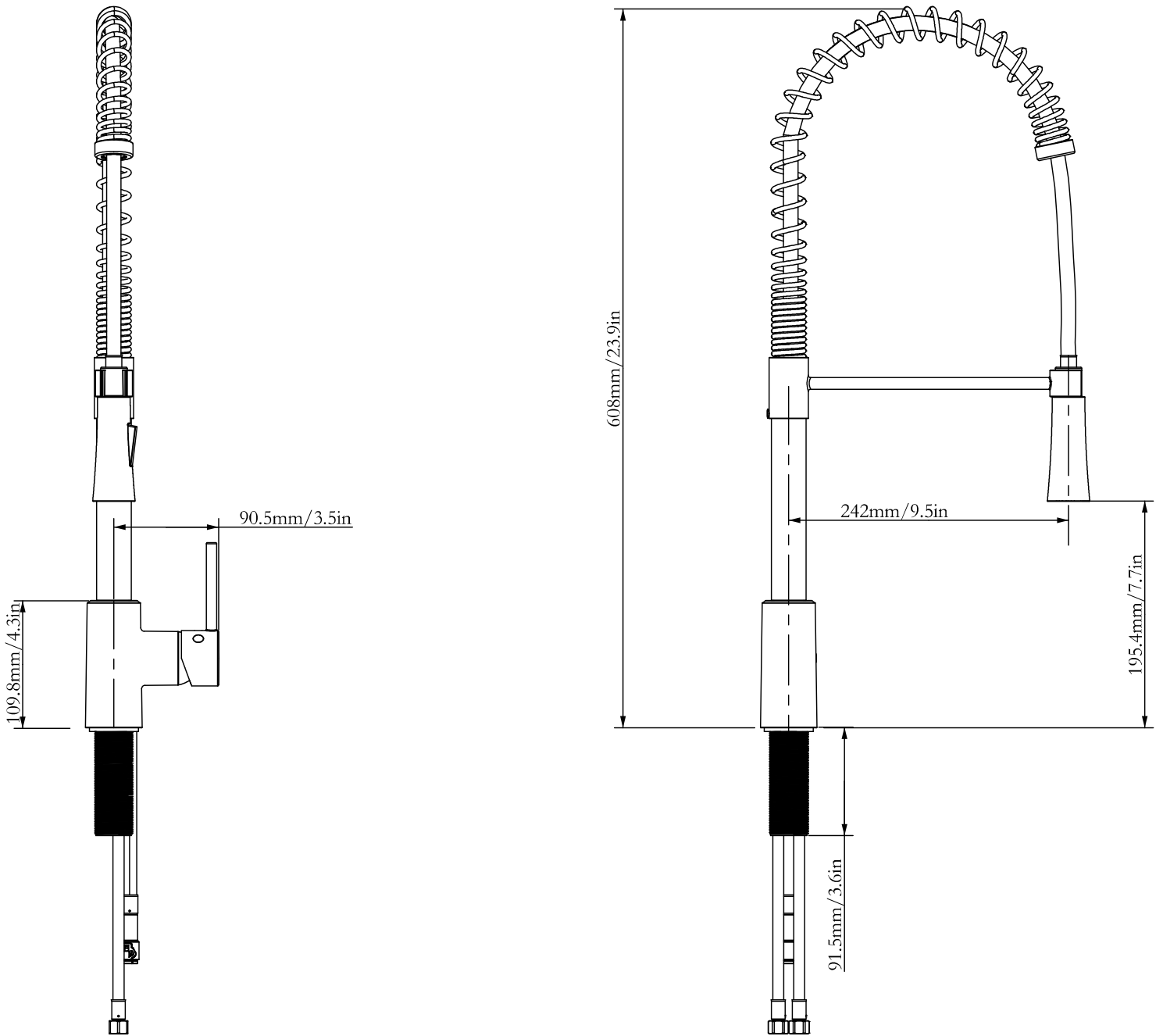
OPTIONAL ACCESSORIES:

2180 0003 - Contemporary Deck Plate
2180 0004 - Traditional Deck Plate
2340 0005 - Lesina Soap Dispenser
2340 0006 - Tronto 2.0 Soap Dispenser

CODES / STANDARDS:

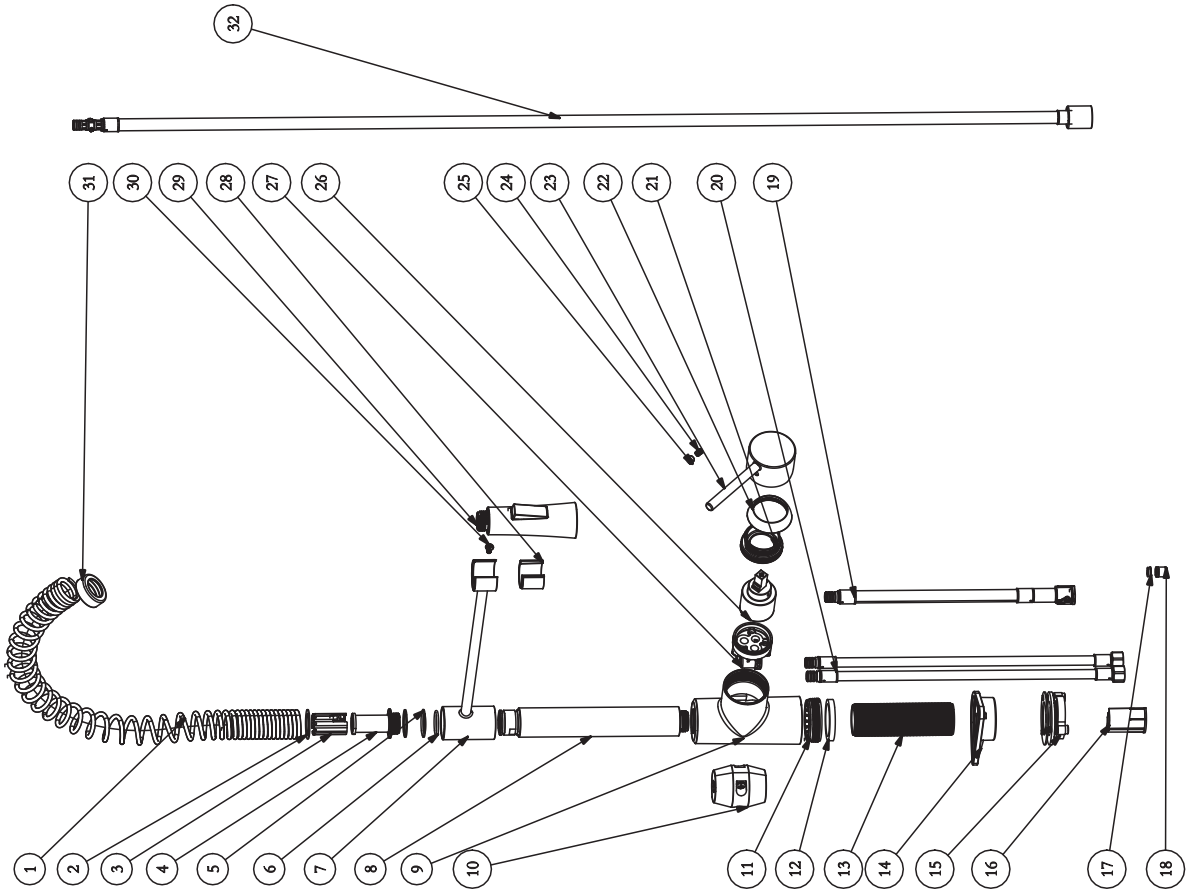
ASME A112.18.1 / CSA B125.1 / NSF 61 / NSF 372 / AB1954 / DOE - Energy Policy Act 1992 / CEC - California Energy Consumption / Meets CalGreen requirements for kitchen faucets

BOCCHI®



IMPORTANT: These measurements are subject to change or cancellation. No responsibility is assumed for use of superseded or voided pages. BOCCHI reserves the right to make revisions without notice to product specifications.

BOCCHI®



NO.	DWG. NO.	NAME	MATERIAL	QTY
32	999910061207	Pull-down Hose Assembly	TPE+PE-RT+PA	1
31	121010211041	Ring	H57	1
30	C4K7X01M	Screw	SUS304	1
29	121010491032	Sprayer	ABS757	1
28	12101431010	Cartridge Seat	POM_WK2001	1
27	12101021011	Cartridge Assembly	PPA+50%GF	1
26	F35ZT_6X01	Red and Blue Cap	POM	1
25	999910101773	Screw	SIL	1
24	C5XKX03M	Handle	SUS302	1
23	12101431011	Decorative Cover	Zinc Alloy	1
22	999910101852	Nut	ABS757	1
21	121010281016	Inlet Hose Assembly	HP657-3	1
20	999910060483	Outlet Hose Assembly	SUS304+PVC	2
19	999910061139	Check Valve	TPE+PVC	1
18	N10X10_5X01	Flow Regulator	POM	1
17	121010481019	Gasket	POM/M90	1
16	121010221021	Accessories bag	Aluminium Alloy	1
15	113110411013	Stabilizer gasket	POM_CF2001	1
14	121010481008	Mounting threaded pipe	Aluminium Alloy	1
13	121010281001	Washer	EVA	1
12	121010211001	Nut	PA66+30%GF	1
11	999910101762	weight	Iron	1
10	121010221048	Body	Zinc Alloy	1
9	121010211050	Connecting pipe	SUS304	1
8	12101431006	Stems	Zinc Alloy	1
7	R2ZXX01	O-ring	NBR_70°	2
6	121110131011	Washer	POM	2
5	121010211008	Spindle	Aluminium Alloy	1
4	121010281004	Gasket	POM	1
3	121010211004	Washer	PTFE/白	1
2	999910041103	Spring	SUS304	1

IMPORTANT: These measurements are subject to change or cancellation. No responsibility is assumed for use of superseded or voided pages. BOCCHI reserves the right to make revisions without notice to product specifications.