

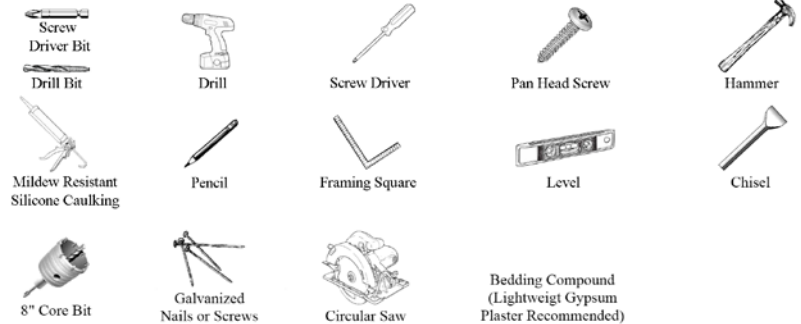
Only **4** E-Z Steps

# 1 1/4" BARRIER-FREE 4-PIECE SHOWER w/ E-Z Pin INSTALLATION



**Clarion**  
EVERYDAY LUXURY

## Suggested Tools



## Key Points to remember during installation

1. The subfloor must be 100% flat, level and free from obstructions of any kind.
2. When installed, the drain of the shower and the piping must be centered on the core or box out prepared in the subfloor. Check to make sure that the core is drilled deep enough (At least 2 1/4") for the drain fitting that you are using, and that nothing will prevent it from allowing the floor of the unit to rest on the subfloor as designed. Please note that the drain pocket of this shower will protrude below the subfloor as shown in **Figure 1.1** in this manual.
3. In buildings with a poured in place floor, make sure that there is no raised lip at the edge of the drain box out area.
4. If installing the drain fitting prior to installation of the shower, precautions must be taken to keep the shower from resting on the drain fitting. Failure to do this may cause warping or cracking of the shower floor.
5. When plumbing, there should be no fittings installed on the drain pipe within 2 1/2" of the top of the subfloor. This will interfere with the drain fitting and cause the floor of the unit not to rest on the subfloor as designed.
6. To meet full compliance with ADA the front edge of the seat must be within 3" [76mm] from the edge of the finished shower pocket. This must be considered when framing the pocket for the unit.
7. Install optional collapsible threshold at final time stage, after the unit has been installed and cleaned of any debris.

Clarion Bathware's 1 1/4" Barrier-Free 4-Piece Shower w/ E-Z Pin System is to be stored in a dry area prior to installation to prevent moisture from attacking the reinforcement material which could cause warpage to the unit. Additionally, the units cannot be stored in a manner where the bottom of the unit and the drain are forced upward.

Please consult all local and state building codes and read the entire installation instructions prior to beginning the installation of this unit to ensure that the installation is performed correctly. Clarion's 1 1/4" Barrier-Free 4-Piece Shower with our E-Z Pin System have been designed to be able to be installed in the framing pocket with Only 4 E-Z Steps. However, if you wish to assemble the entire unit before installing it, you may do so. It is recommended that you disassemble and reassemble the shower before doing this so that you can apply silicone caulking to seams of the unit. Be sure to apply the silicone caulking as described in the instructions below.

**WARNING: FAILURE TO FOLLOW THESE INSTALLATION INSTRUCTIONS COULD VOID THIS PRODUCTS WARRANTY.** The 3/4" Barrier-Free 4-Piece Shower stall is a very sensitive unit to properly install. It is very important that the procedures are followed exactly during the installation process to create the ideal barrier free access area. A licensed plumber is required to install or supervise the installation of these units. These units are thoroughly tested in the plant to ensure their ability to drain water. Failure to follow these handling and installation instructions may cause improper drainage, thus voiding the unit's warranty.

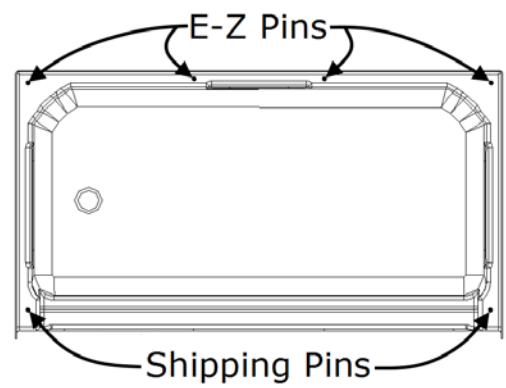
Clarion Bathware's 1 1/4" Barrier-Free 4-Piece Showers use factory installed E-Z Pin System to secure the unit for shipping. These E-Z Pins are riveted and bonded to the multiple piece unit to align the walls of the shower to the base during the installation.

**Unit Preparation & To disassemble the unit:** Remove shipping packaging, shipping pins, and wing nuts on each of the E-Z Pins. These can be discarded as they are not used in the installation process. On the bottom of the back wall there is a piece of OSB board for shipping purposes. This needs to be cut down so that it will not interfere with leveling the shower stall properly. To do this, set a circular saw to cut a 7/16" deep cut. Cut the OSB that extends past the bottom of the unit. Use caution when cutting, there are wood blocks that are secured with metal staples on the inside edge of the board.

**\*\*This board should not be removed until the unit is ready to be installed. Removal of the board before installation may damage the floor of the shower and void it's warranty.\*\***

Set all pieces of the unit in a safe location.

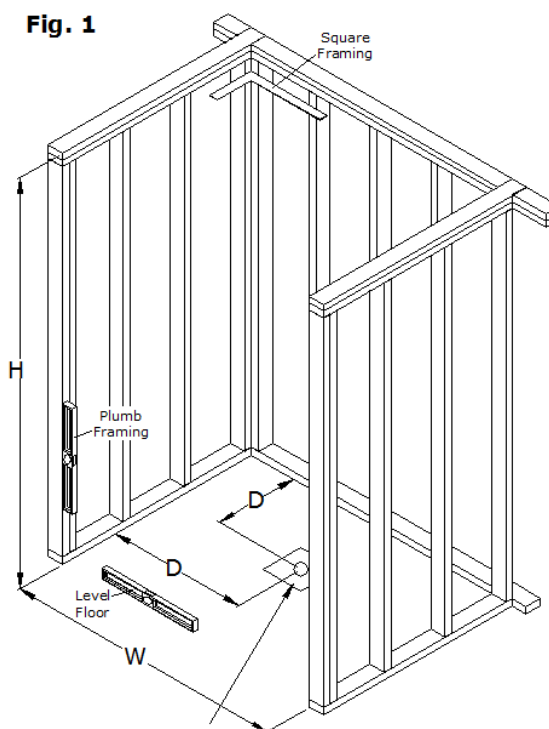
**Note to installer:** To simplify the installation process, the unit may be dry fitted into the pocket prior to applying silicone caulking and securing.



## **Step #1 Framing the Pocket (Fig 1)**

Frame a square and plumb pocket to dimension of the unit. The floor of the pocket must be prepared perfectly flat and level to obtain proper drainage. If there are any obstructions, you will need to chisel or cut the concrete out to create a surface that allows for proper slope to the drain. Depending upon the core opening in the concrete slab, the installer may find it necessary to core a larger and/or deeper opening permitting adequate clearance for the drain. An 8" core at least 2" deep may be desirable. If the core cut is larger than 8" x 8" or 8" diameter, we recommend back filling the core cut, sloping the fill to the drain. This will assure that the area of the floor around the drain receives proper support.

**Fig. 1**



\* H= At minimum the height of the unit provided on the cutsheet.

\* W= Width dimension provided on the cutsheet of the unit.

\* D= Dimensions provided on the cutsheet of the unit which show the drain location.

NOTE: Accommodations should be made in the pocket dimensions for any accessories attached to the unit.

8" x 8" or 8" Dia. Core at least 2" deep must be drilled on center with the drain to permit the drain area to be pulled down by the plumbing connection. The drain must be aligned in the center of the core to insure proper installation and drainage slope.

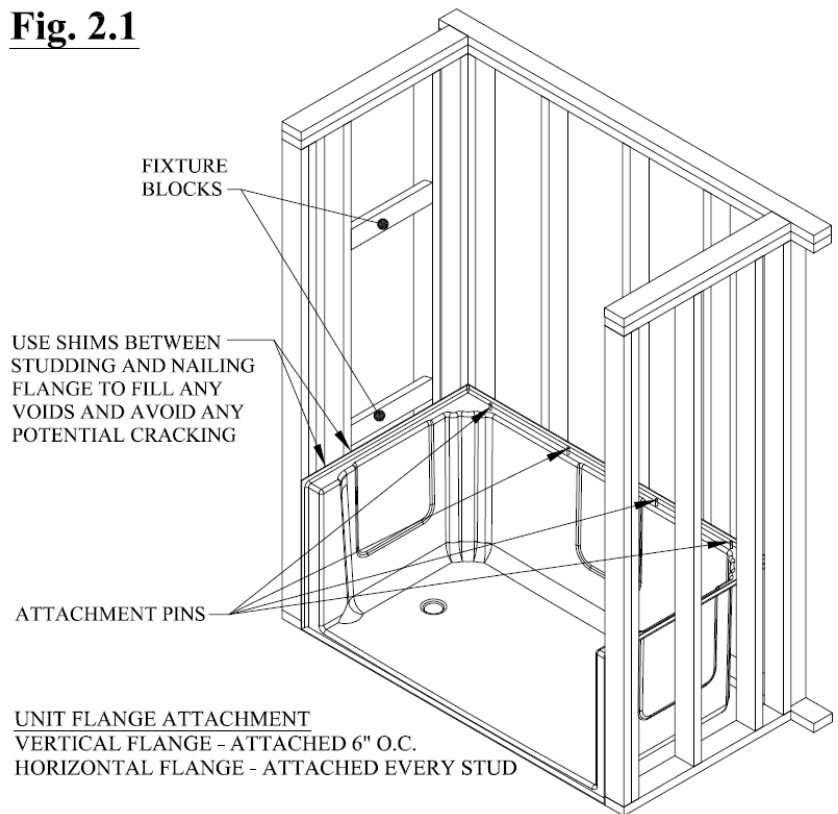
**Note to installer:** Pocket dimensions and drain location can be obtained from your retailer or at [www.clarionbathware.com/search](http://www.clarionbathware.com/search) (1) enter model number of the unit then click search, (2) select the product picture, (3) Under downloads and maintenance select the product cut sheet PDF

## Step #2 Setting the Base and Mounding Method (*Figure 2.1, 2.2 & 2.3*)

Install the drain and make sure that it is sealed properly and not leaking. Test fit the base into the framed pocket. Check that the drain is not resting on anything which can force the unit floor upwards. Level and plumb the unit. Using a pencil mark all flanges on the studding. This will assist when setting the unit into the bedding compound. Remove the unit and prepare a bedding compound for the unit to be set into.

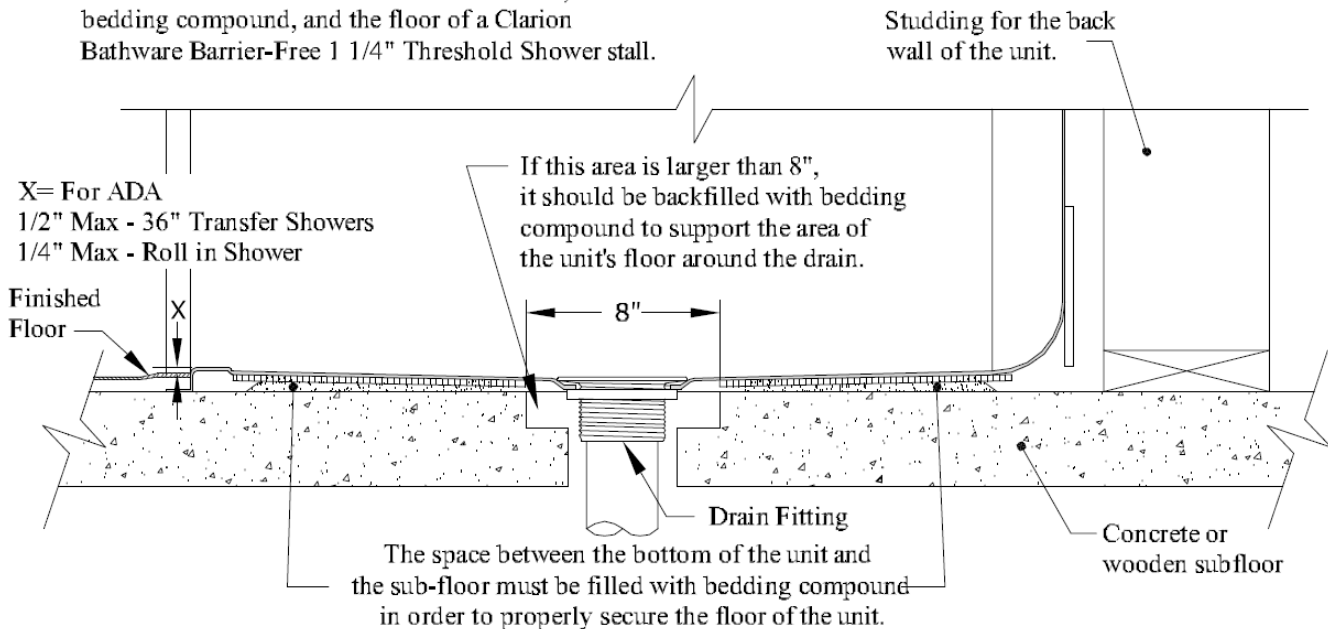


**Fig. 2.1**



**Fig. 2.2**

Below is a cross-section view of the subfloor, bedding compound, and the floor of a Clarion Bathware Barrier-Free 1 1/4" Threshold Shower stall.

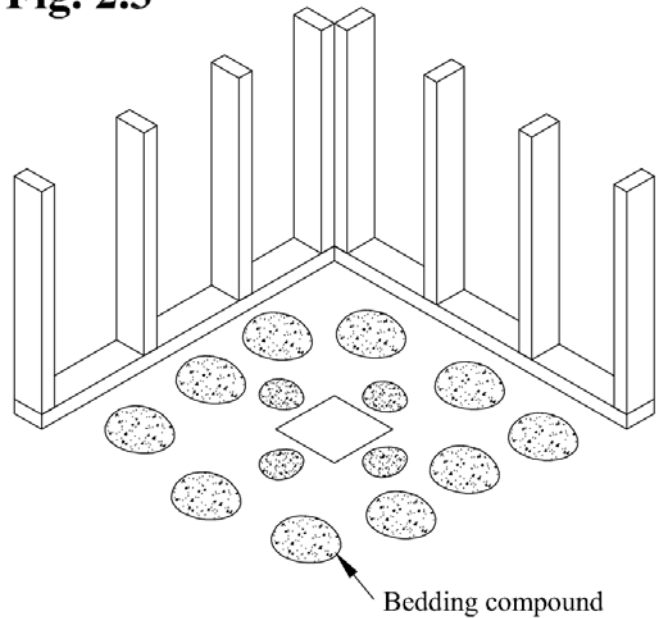


**\*\*FOAM SHOULD NEVER BE USED AS A BEDDING MATERIAL. \*\***

A proper bedding compound would be cement slurry, thin mortar mix, setting type drywall compound, or lightweight gypsum plaster. Although all the listed products are acceptable, Clarion Bathware recommends using lightweight gypsum plaster for optimal results. In addition to being a user friendly product to use it also has a slow curing time and a compression rating of about 700 PSI. Two brands of this plaster to look for are Gold Bond Gypsolite Plaster and US Gypsum Structo-Lite Plaster.

Mix the bedding compound to a manageable consistency. If the bedding material is too thick it may not spread out properly and can cause the unit floor to be forced up. If the bedding material is too thin it may seep out from under the unit. This can cause improper support of the unit floor. After mixing the bedding material to a consistency of “cool-whip”, place it onto the floor in mounds keeping in mind the area around the drain will be thinner due to the slope of the shower floor. Placing the bedding material in mounds reduces waste and over application which may cause the unit to drain improperly or not at all. When the unit is set onto the mounds, they will spread out easier than trying to completely cover the entire floor. Small void areas of 2”-3” are not a problem as the shower floor has sufficient strength to bridge them.

**Fig. 2.3**



Set the unit in the bedding compound. Align the flanges of the unit with the pencil marks. Check that the unit is plumb and level then attach each vertical flange with a fastener so that the unit won't shift. Check the floor of the shower for high spots that could restrict the water drainage. High spots in the bedding compound under the floor can be worked out by applying pressure to the area. The threshold of the unit should be fairly flat with no depressions. A slight rise is acceptable as long as proper slope to the drain is maintained.

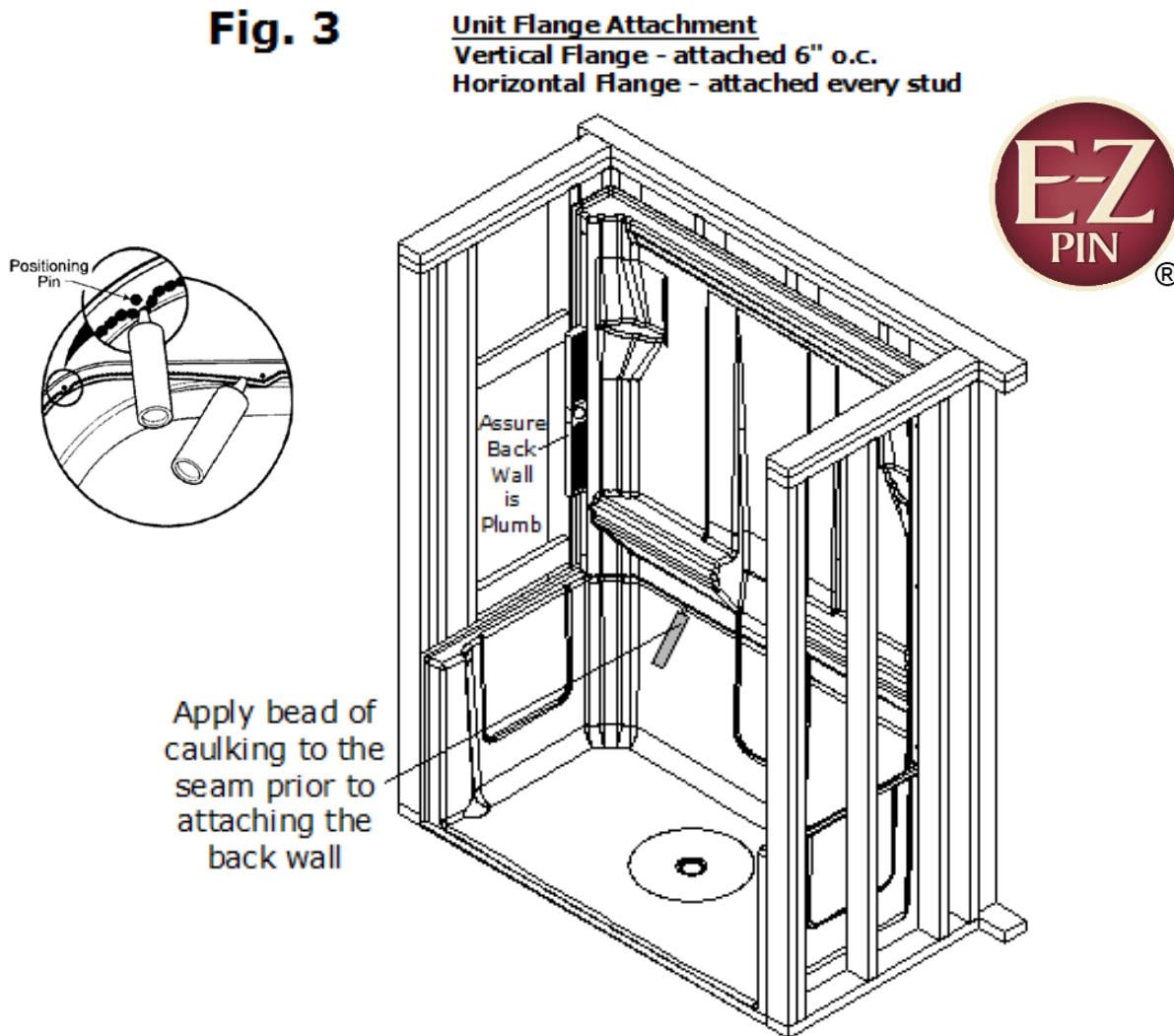
When the unit is plumb and level, and the slope to the drain is assured fill any gaps between the flange at the top of the base and the framing with appropriate size shims. Secure the unit to the framing with galvanized nails or screws. Secure the vertical flanges every 6" or as necessary to keep the flanges flush to the studding. Secure the horizontal flanges wherever they come into contact with the studding. ***(In an application where the unit is installed over wall board and will be installing a Clarion Bathware Trim Kit, for best results your fasteners will need to be flush with the nailing flange. Clarion Bathware recommends centering and counter sinking a corrosion resistance fastener on the nailing flange. Raised fasteners will result in a problematic finishing process of the trim kit.)***

This unit has an integral floor-nailing flange. This flange was designed to eliminate floor warpage that is common with most  $\frac{3}{4}$  inch shower units. This flange must be attached to the floor, before the bedding material cures, to allow the unit to drain properly. If the floor nailing flange was shimmed, insure that the shims are still in place and that the floor nailing flange is still level. A screw should be inserted in the middle of the flange, and screws should be placed every 12" to each side, or as necessary to make sure that there are no bows or bumps in this flange. To attach the nailing flange to a cement floor, predrill and counter sink the fiberglass flange to accommodate concrete anchor screws. Tapcon cement screws may be used but be careful not to over tighten them. Anchor screws with expansion adaptors are the preferred method to secure the flange to the floor. Please note that the use of any mechanical nailing gun can cause damage to the fiberglass flange and is not a recommended means of securing this flange to the floor. Use of any mechanical nailing gun may result in voiding the unit's warranty. After securing the floor flange re-check that proper slope has been achieved in the shower floor. Assure that there are no dips, humps, or other restrictions in the shower floor which will prevent proper water drainage

## Step #3

### Setting the Side/Back walls (Figure 3)

Locate the back wall section. The E-Z Pins on the top of the base section fit through holes in the bottom of the back wall section. This will line the back wall up correctly. Before installing the back wall, apply a bead of silicone caulking (not latex caulking) on the seam that will be between the base and back wall. Be sure that the bead goes in front of the E-Z Pins on the base. **(Figure 3)** Guide the back wall section onto the installed base section. ***Make sure that the back wall section is plumb. Use shims to get it plumb if needed. The side wall sections will not install correctly if the back wall is not plumb.*** Once the back wall section is plumb and seated properly on top of the base section, secure the back wall section to the studding. Secure the vertical flanges every 6" or as necessary to keep the flanges flush to the studding. Secure the horizontal flanges wherever they come into contact with the studding. Verify again that the wall section is plumb.



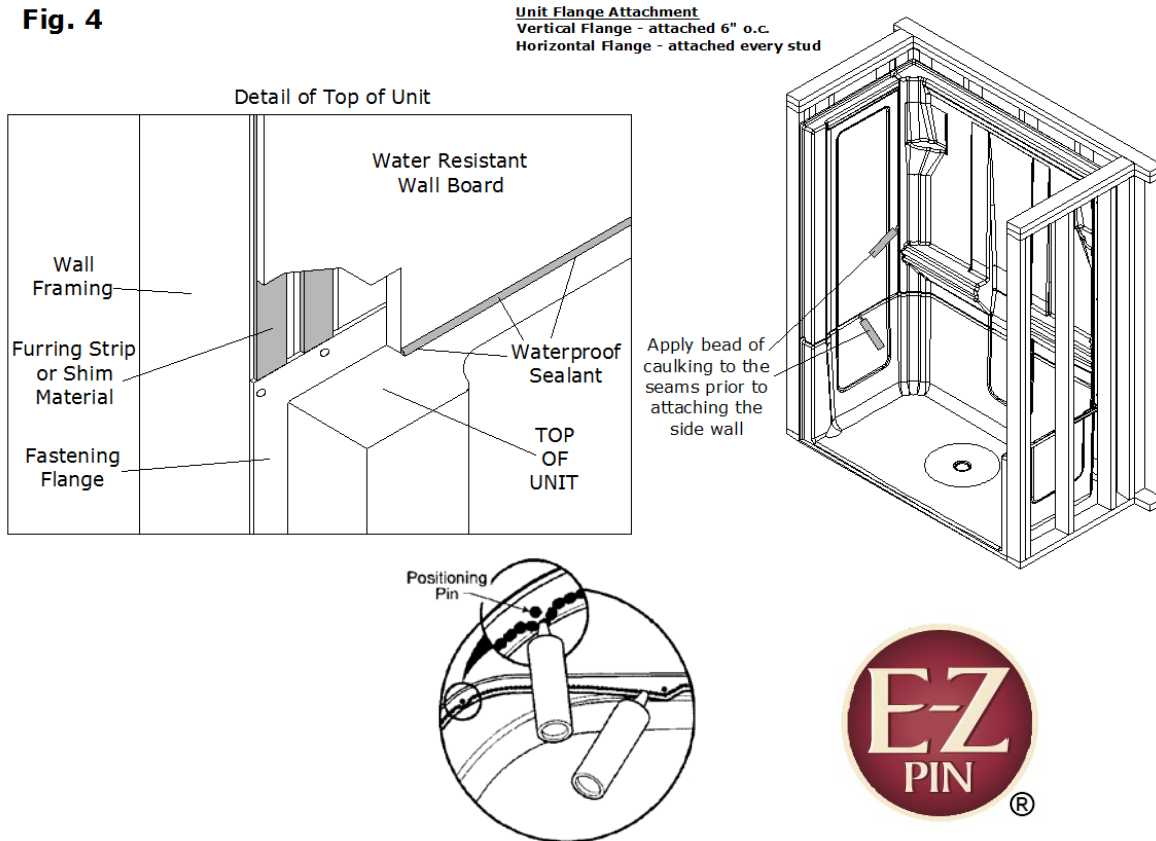
## Step #4

### Figure 4

Locate the left hand wall section of the unit. The side walls are designed to be easy to install from the front of the unit. Apply a bead of silicone caulking (not latex caulking) on the seam that will be between the base and the side wall & the side wall and the back wall. As with the back wall installation, there are E-Z Pins and mating holes to guide the wall into place. Once the left side wall section is seated properly on top of the base section, secure the side wall section to the studding. Secure the vertical flanges every 6" or as necessary to keep the flanges flush to the studding. Secure the horizontal flanges wherever they come into contact with the studding.

Repeat **Step #4** process for the right hand wall section.

**Fig. 4**



### Final Notes:

A floor-leveling agent can be used under the finished floor covering to decrease the transition between the finished floor and shower threshold. Depending on the unit type the maximum transition from the top of the threshold to the top of the finished floor must be  $\frac{1}{2}$ " to  $\frac{1}{4}$ " for ADA threshold compliance. We recommend Feather Finish for all vinyl applications or grout for tile installations.

You can finish off your new unit with a variety of materials which are accepted by local building codes. Some ideas are tile, drywall caulking, drywall mud, plaster, wood or plastic trim.

Clean your new tub with a liquid detergent and warm water.

Do not use any abrasive cleaners such as scouring powder or liquid abrasive cleaners.



**IF A BEDDING MATERIAL IS USED UNDER A UNIT; CEMENT SLURRY, THIN MORTAR MIX, PLASTER OF PARIS, OR A COMPARABLE FLOOR FILLING COMPOUND THAT IS NOT WATER SOLUBLE ARE PROPER BEDDING COMPOUNDS. WATER SOLUBLE MATERIALS, FOAM AND OTHER EXPANDING MATERIALS ARE NEVER TO BE USED AS A BEDDING COMPOUND.**

**IF YOU HAVE ANY QUESTIONS REGARDING INSTALLATION OF YOUR CLARION BATHWARE PRODUCT, PLEASE CALL OUR CUSTOMER SERVICE DEPARTMENT AT 1 (800) 576-9228 OR BY E-MAIL AT CUSTOMERSERVICE@CLARIONBATHWARE.COM**

**JOB SITE INSTALLATION OF OWNER SUPPLIED ACCESSORIES**

All Clarion Bathware units purchased with supplied accessories are custom reinforced at the factory to accommodate the mounting of said accessories.

Any grab bars installed on a Clarion Bathware unit at the job site must have proper reinforcement (wood support and backing plates) at all mounting areas and should comply with ANSI A117.1, Uniform Federal Accessibility Standards (UFAS) and ASTM F446 specifications for grab bars in the bathing area.

Job-site installation of third party supplied accessories is entirely at the risk and full responsibility of the owner. Any damage to Clarion Bathware units or the property during or after accessory installation, or any injuries due to improper installation remain the sole responsibility of said owner and cannot be attributed to Clarion Bathware, Inc.

**\*\*\*WE SUGGEST THAT THE CUSTOMER AVOIDS USING A BATH MAT IN THE UNIT, AS IT COULD CAUSE WATER STAINS OR BLISTERING TO THE FINISH SURFACE OF THE UNIT.**

CLARION BATHWARE PRODUCTS ARE CERTIFIED TO MEET CSA B45.5/IAPMO Z124 STANDARD. FOR DETAILS, PLEASE REFER TO ICC-ES PMG CERTIFICATION PROGRAM.



44 Amsler Avenue  
Shippensburg, PA 16254  
(814) 226-5374 (800) 576-9228  
Fax: (814) 226-0730 [www.clarionbathware.com](http://www.clarionbathware.com)



# AcrylX™ with the Strength of ArmorCore™ Lifetime Warranty



This warranty applies to all Clarion Bathware AcrylX™ with Armorcore™ base reinforcement produced after 1-23-2017.

Clarion Bathware warrants to the original purchaser and consumer that its products will be free from defects in material or workmanship when properly installed pursuant to Clarion Bathware installation instructions for the following warranty periods:

#### Lifetime Warranty

- (1) AcrylX™, Residential\* Use
- (2) CenturyStone™, Residential\* Use

#### Thirty (30) Year Warranty

- (1) AcrylX™, Commercial\* Use
- (2) CenturyStone™, Commercial\* Use

Upon inspection by an authorized representative, Clarion Bathware will repair or exchange at its sole discretion, any unit found to be defective in material or workmanship. The exchange of a unit will only be considered when Clarion Bathware has eliminated all options to restore the unit to acceptable factory condition. Exchange of a unit is limited to supplying replacement product of comparable size and style, and does not include any cost of removal or installation.

#### **EXCEPTIONS**

This warranty shall be voided if the unit is moved from its place of initial installation or is not installed in accordance with the instructions supplied by the manufacturer of the unit. Clarion Bathware will not be held responsible for any damages resulting from improper installation.

Further, this warranty does not apply if the unit has been subjected to accident, abuse, misuse, damage caused by flood, fire, or other force of nature.

Any unauthorized repair or modification to the product would render the warranty null and void.

This warranty does not apply to any equipment or accessories not installed by Clarion Bathware and Clarion Bathware will not be held liable for any results of such acts.

Clarion Bathware is not responsible for any consequential or incidental mishaps, inconvenience, time loss, incidental expense, materials or labor related to the installation of hardware or the actual tub.

The owner agrees by use of the unit that the obligations of Clarion Bathware shall not extend to contingent or indirect damage or injury to the structure of its contents, that the obligations of Clarion Bathware are limited to those set forth herein, and that no other obligations, expressed or implied, are assumed by Clarion Bathware.

The product is not recommended for outside storage.

To obtain warranty service, the Customer must give prompt notice to Clarion Bathware of any claim.

Clarion Bathware is a division of American Bath Group Inc.

\*Residential Use is considered any unit Installed in a permanent residence dwelling of Individual ownership, such as but not limited to single family home, multi-family home, or condominium. Commercial Use is considered transient lodging, such as but not limited to healthcare facility, dormitory, hotel, or apartment complex.