

TRAP PRIMER ADAPTER

695 series

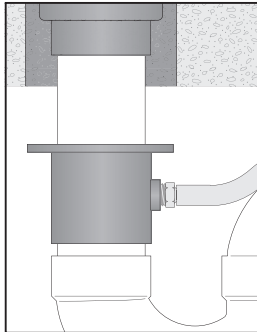
SPECIFICATION

Sioux Chief 695 Series trap primer adapters shall be used where necessary in drainage systems. Adapter shall have ABS or PVC Sch. 40 hub x hub connection and FIP thread trap primer port for connection of water line to feed P-trap.

MATERIALS

ABS or PVC

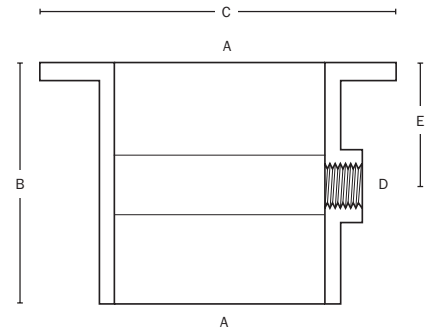
INSTALLATION



Solvent weld adapter on vertical waste line just above trap to be served.

DIMENSIONS

A: connection	2", 3" or 4" Sch. 40 hub
B: overall height	
2" model	3 ³ / ₈ "
3" model	4"
4" model	4 ¹ / ₄ "
C: flange diameter	
2" model	4 ⁵ / ₈ "
3" model	6"
4" model	7"
D: port connection	1/2" FIPT
E: top to port centerline	2"



Create Item Number **695-AB**

e.g. 695-3P = PVC trap primer adapter with 3" Sch. 40 hub connection and 1/2" FIPT trap primer port

<u>A</u>	CONNECTION SIZE	<u>B</u>	MATERIAL
<input type="checkbox"/> 2	2" Sch. 40 hub	<input type="checkbox"/> A	ABS
<input type="checkbox"/> 3	3" Sch. 40 hub	<input type="checkbox"/> P	PVC
<input type="checkbox"/> 4	4" Sch. 40 hub		

Item # Submitted _____
Job Name _____
Location _____
Engineer _____
Contractor _____
PO# _____ TAG _____