

COMBINATION ROOF DRAIN & OVERFLOW

868 series

SPECIFICATION

Sioux Chief 868 series combination roof drain and overflow drain fixtures shall be used where necessary in drainage systems. Drain and overflow fixtures shall have low-profile enamel coated cast iron dome strainers and gravel guards. Drain and overflow fixtures shall have cast iron no-hub connections. Fixtures designed in accordance with ASME A112.6.4-2003

MATERIALS

dome strainer: enamel coated cast iron
gravel guard / water dam: enamel coated cast iron
drain body: enamel coated cast iron
sump receiver: powder-coated 12 gauge steel

STRAINER FREE-AREA

75.75 square inches

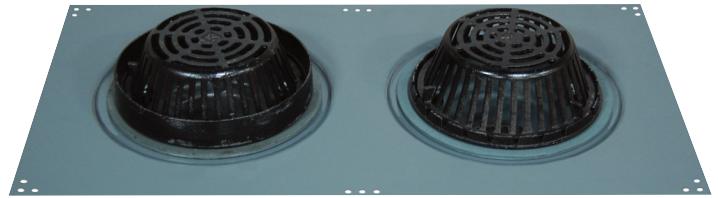
CONNECTION TYPE

cast iron no-hub

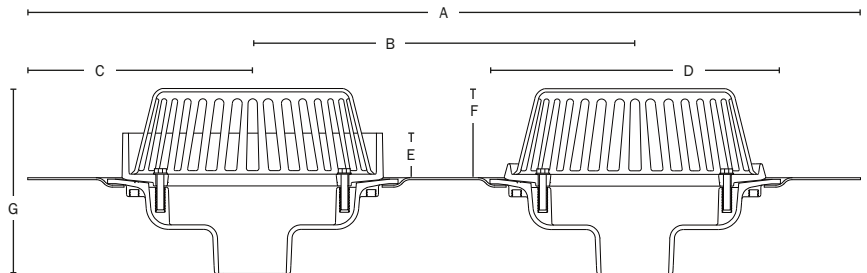
DIMENSIONS

A: sump receiver length x width 44 3/8" x 24"
 B: fixture center-to-center 20 3/8"
 C: fixture center to receiver end 10"
 D: fixture flange diameter 15"
 E: water dam height 2 1/4"
 F: dome strainer height 4 3/8"
 G: overall height 10"

Item # Submitted	_____
Job Name	_____
Location	_____
Engineer	_____
Contractor	_____
PO#	_____ TAG _____



868-D1504



Create Item Number

868-A

e.g. 868-D1504 = Combination roof drain and overflow drain with 4" cast iron no-hub connection

A	CONNECTION SIZE	ACCESSORIES
<input type="checkbox"/> D1503	3" cast iron no-hub	<input type="checkbox"/> 868-15U Underdeck clamp kit
<input type="checkbox"/> D1504	4" cast iron no-hub	<input type="checkbox"/> 868-15SH Undermount Hardware kit
<input type="checkbox"/> D1506	6" cast iron no-hub	
<input type="checkbox"/> D1508	8" cast iron no-hub	